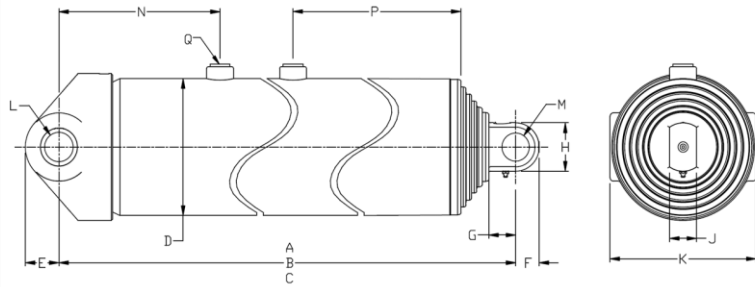


Technical information



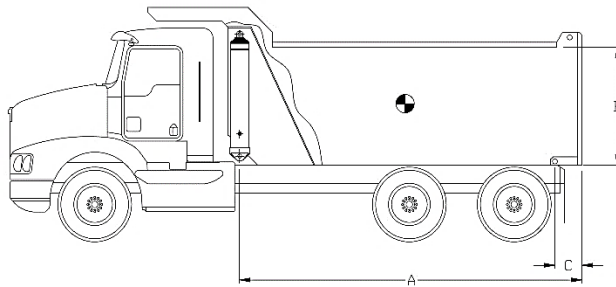
Dimensions	Imperial	Metric
A (stroke)	250.31 in	6 358 mm
B (closed)	66.50 in	1 689 mm
C (opened)	316.81 in	8 047 mm
D	8.80 in	224 mm
E	2.38 in	60 mm
F	1.63 in	41 mm
G	2.00 in	51 mm
H	3.25 in	83 mm
J	2.00 in	51 mm
K	9.50 in	241 mm
L	2.13 in	54 mm
M	2.04 in	52 mm
N	12.00 in	305 mm
P	22.00 in	559 mm
Q	SAE-16	

Stage	Effective diameter		Effective area		Stroke	
1	7.673 in	195 mm	46.24 in ²	29 832 mm ²	49.81 in	1 265 mm
2	6.673 in	169 mm	34.97 in ²	22 563 mm ²	50.19 in	1 275 mm
3	5.793 in	147 mm	26.36 in ²	17 005 mm ²	50.25 in	1 276 mm
4	5.000 in	127 mm	19.64 in ²	12 668 mm ²	50.63 in	1 286 mm
5	4.250 in	108 mm	14.19 in ²	9 152 mm ²	49.44 in	1 256 mm

Specifications	Imperial	Metric
Weight without hydraulic fluid	675 lb	307 kg
Hydraulic fluid volume	34.0 gal. (US)	129 l
Maximum working pressure	2 250 psi	155 bar
Maximum pump flow	50 gpm	189 lpm
Maximum cylinder capacity*	37.1 US tons	33 657 kg

Installation components	Model	Part no.
Block	-	-
Frame	-	-
Hinge	-	-

Cylinder capacity



A = Body Length
B = Body height
C = Overhang

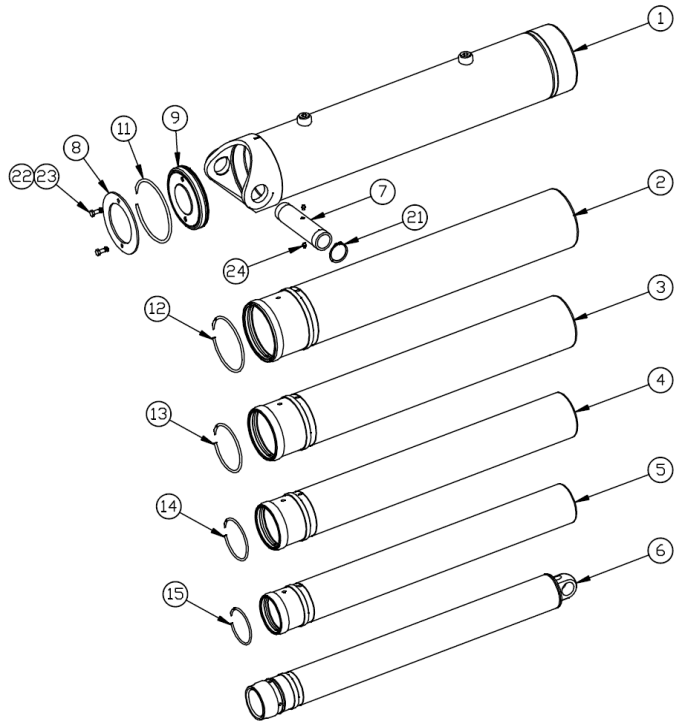
Note:	Body length	26.0 ft		28.5 ft		32.0 ft	
Cylinder capacities based on 90% of the maximum working pressure.	Overhang	12 in	18 in	12 in	18 in	12 in	18 in
	Dump angle	50.4°	51.5°	45.3°	46.3°	39.8°	40.5°
	Body height	Cylinder capacities in US tons at 2000 psi (at 2250 psi)					
For reference only. See www.mailhotindustries.com	36 in	35.1 (39.4)	36.5 (41.0)	33.0 (37.1)	34.0 (38.3)	31.1 (35.0)	31.9 (35.9)
	48 in	36.5 (41.0)	38.1 (42.8)	34.0 (38.2)	35.1 (39.5)	31.8 (35.8)	32.6 (36.7)
	60 in	38.0 (42.7)	39.8 (44.8)	35.0 (39.4)	36.3 (40.9)	32.5 (36.6)	33.4 (37.6)

* See product manual

Subject to change without notice, all rights reserved.

Item	Part no.	Description
------	----------	-------------

1	ROG087030-A	BASE TUBE Ø8.78
2	RMG077107-A	SECTION Ø7.7
3	RMG067106-A	SECTION Ø6.7
4	RMG057105-A	SECTION Ø5.7
5	RMG050104-A	SECTION Ø5
6	RNG042034-A	LAST SECTION Ø4.25
7	SBG021095001	BUSHING
8	RFG081014	END CAP Ø8-1/8
9	RFG081013	END CAP Ø8-1/8



Snap ring kit Part no. : XB19G0765

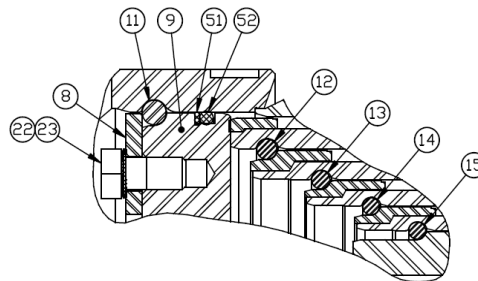
Item	Description
------	-------------

11	SNAP RING Ø8-1/8
12	SNAP RING Ø7
13	SNAP RING Ø6-1/16
14	SNAP RING Ø5-1/4
15	SNAP RING Ø4-1/2

Hardware kit Part no. : ZX03G0765

Item	Description
------	-------------

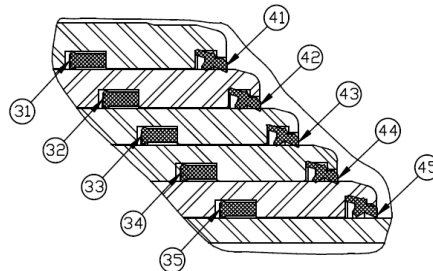
21	SNAP RING N5100-275
22	HEX BOLT 1/2-13 NC X 1 LG GR. 5
23	SERRATED SPRING LOCK WASHER
24	GREASE FITTING STRAIGHT 1/8 NPT



Seal kit Part no. : UI47G0765

Item	Description
------	-------------

31	U-CUP Ø8.175 X Ø7.675 X 9/16
32	U-CUP Ø7.175 X Ø6.675 X 9/16
33	U-CUP Ø6.170 X Ø5.795 X 3/8
34	U-CUP Ø5-3/8 X Ø5 X 3/8
35	U-CUP Ø4-5/8 X Ø4-1/4 X 3/8
41	WIPER Ø7.675
42	WIPER Ø6.675
43	WIPER Ø5.795
44	WIPER Ø5
45	WIPER Ø4-1/4
51	BACK-UP RING Ø8-1/8 X Ø7-3/4
52	O-RING Ø8-1/8 X Ø7-3/4



* See product manual

Subject to change without notice, all rights reserved.