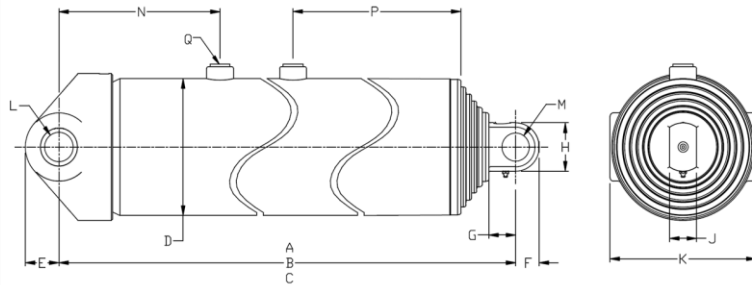


Technical information



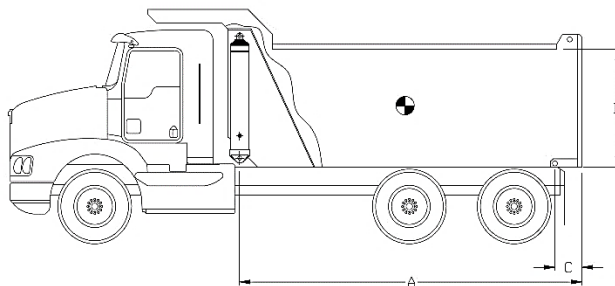
| Dimensions | Imperial | Metric |
|------------|-----------|----------|
| A (stroke) | 262.81 in | 6 675 mm |
| B (closed) | 69.25 in | 1 759 mm |
| C (opened) | 332.06 in | 8 434 mm |
| D | 9.91 in | 252 mm |
| E | 2.50 in | 64 mm |
| F | 1.75 in | 44 mm |
| G | 2.00 in | 51 mm |
| H | 3.50 in | 89 mm |
| J | 2.00 in | 51 mm |
| K | 10.88 in | 276 mm |
| L | 2.13 in | 54 mm |
| M | 2.04 in | 52 mm |
| N | 12.00 in | 305 mm |
| P | 22.00 in | 559 mm |
| Q | SAE-16 | |

| Stage | Effective diameter | | Effective area | | Stroke | |
|-------|--------------------|--------|-----------------------|------------------------|----------|----------|
| 1 | 8.693 in | 221 mm | 59.35 in ² | 38 291 mm ² | 52.50 in | 1 334 mm |
| 2 | 7.673 in | 195 mm | 46.24 in ² | 29 832 mm ² | 52.38 in | 1 330 mm |
| 3 | 6.793 in | 173 mm | 36.24 in ² | 23 382 mm ² | 52.56 in | 1 335 mm |
| 4 | 5.793 in | 147 mm | 26.36 in ² | 17 005 mm ² | 52.56 in | 1 335 mm |
| 5 | 5.000 in | 127 mm | 19.64 in ² | 12 668 mm ² | 52.81 in | 1 341 mm |

| Specifications | Imperial | Metric |
|--------------------------------|----------------|-----------|
| Weight without hydraulic fluid | 873 lb | 397 kg |
| Hydraulic fluid volume | 46.3 gal. (US) | 175 l |
| Maximum working pressure | 2 250 psi | 155 bar |
| Maximum pump flow | 50 gpm | 189 lpm |
| Maximum cylinder capacity* | 42.8 US tons | 38 828 kg |

| Installation components | Model | Part no. |
|-------------------------|-------|----------|
| Block | - | - |
| Frame | - | - |
| Hinge | - | - |

Cylinder capacity



A = Body Length
 B = Body height
 C = Overhang

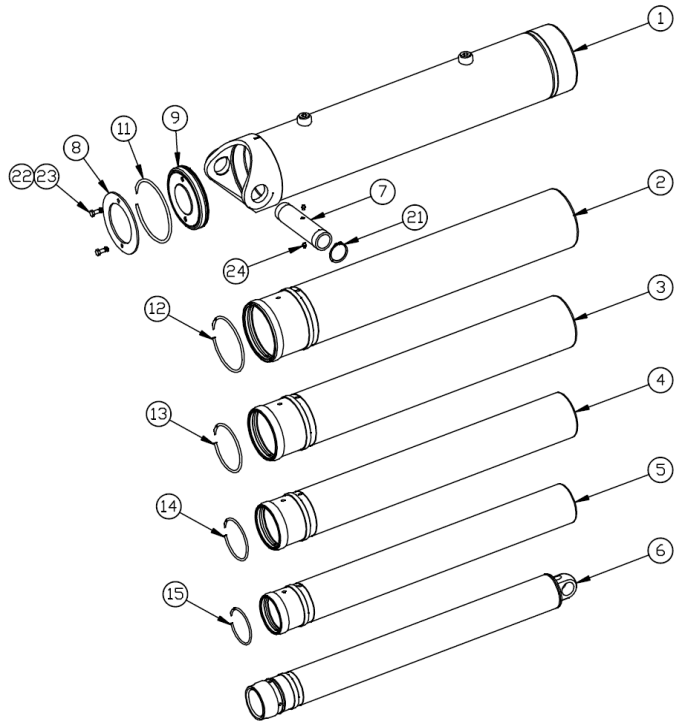
| Note: | Body length | 33.5 ft | | 30.0 ft | | 27.5 ft | |
|---|-------------|--|-------------|-------------|-------------|-------------|-------------|
| Cylinder capacities based on 90% of the maximum working pressure. | Overhang | 12 in | 18 in | 12 in | 18 in | 12 in | 18 in |
| | Dump angle | 39.9° | 40.6° | 45.1° | 46.0° | 49.8° | 50.9° |
| | Body height | Cylinder capacities in US tons at 2000 psi (at 2250 psi) | | | | | |
| For reference only. | 36 in | 42.8 (48.1) | 43.8 (49.3) | 45.1 (50.8) | 46.5 (52.3) | 47.7 (53.7) | 49.5 (55.7) |
| | 48 in | 43.7 (49.2) | 44.8 (50.4) | 46.4 (52.2) | 47.9 (53.9) | 49.5 (55.6) | 51.4 (57.9) |
| | 60 in | 44.6 (50.2) | 45.8 (51.6) | 47.8 (53.8) | 49.4 (55.6) | 51.3 (57.8) | 53.6 (60.3) |
| See www.mailhotindustries.com | | | | | | | |

* See product manual

Subject to change without notice, all rights reserved.

| Item | Part no. | Description |
|------|----------|-------------|
|------|----------|-------------|

| | | |
|---|--------------|-----------------|
| 1 | ROG099033-A | BASE TUBE Ø9.87 |
| 2 | RMG087116-A | SECTION Ø8.7 |
| 3 | RMG077117-A | SECTION Ø7.7 |
| 4 | RMG067118-A | SECTION Ø6.7 |
| 5 | RMG057119-A | SECTION Ø5.7 |
| 6 | RNG050037-A | LAST SECTION Ø5 |
| 7 | SBG021109002 | BUSHING |
| 8 | RFG091011 | END CAP Ø9-1/8 |
| 9 | RFG091012 | END CAP Ø9-1/8 |



Snap ring kit Part no. : XB19G0875

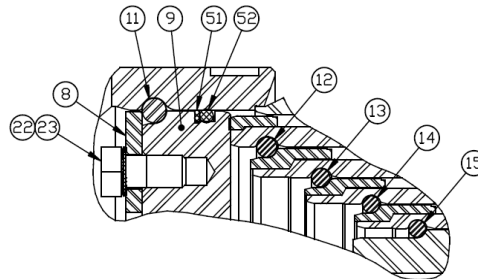
| Item | Description |
|------|-------------|
|------|-------------|

| | |
|----|-------------------|
| 11 | SNAP RING Ø9-1/8 |
| 12 | SNAP RING Ø8 |
| 13 | SNAP RING Ø7 |
| 14 | SNAP RING Ø6-1/16 |
| 15 | SNAP RING Ø5-1/4 |

Hardware kit Part no. : ZX03G0875

| Item | Description |
|------|-------------|
|------|-------------|

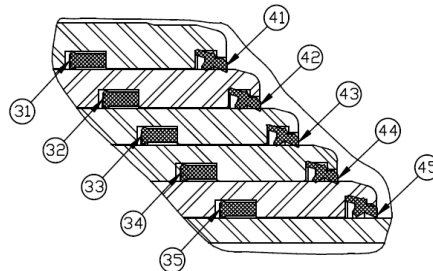
| | |
|----|-------------------------------------|
| 21 | SNAP RING N5100-275 |
| 22 | SERRATED SPRING LOCK WASHER |
| 23 | HEX BOLT Ø1/2-13 UNC X 1 LG GRADE 5 |
| 24 | GREASE FITTING STRAIGHT 1/8 NPT |



Seal kit Part no. : UI47G0875

| Item | Description |
|------|-------------|
|------|-------------|

| | |
|----|---|
| 31 | U-CUP Ø9.195 X Ø8.695 X 9/16 |
| 32 | U-CUP Ø8.175 X Ø7.675 X 9/16 |
| 33 | U-CUP Ø7.175 X Ø6.675 X 9/16 |
| 34 | U-CUP Ø6.170 X Ø5.795 X 3/8 |
| 35 | U-CUP Ø5-3/8 X Ø5 X 3/8 |
| 41 | WIPER Ø8.695 |
| 42 | WIPER Ø7.675 |
| 43 | WIPER Ø6.675 |
| 44 | WIPER Ø5.795 |
| 45 | WIPER Ø5 |
| 51 | BACK-UP Ø9-1/8 X Ø8-3/4 |
| 52 | O-RING Ø9-1/8 X Ø8-3/4 (PARKER N1470/N0674) |



* See product manual

Subject to change without notice, all rights reserved.